



ELVERUM KOMMUNE

---

# **Elverum municipality**

## operations and organisation

by Municipality Deputy Director Aasmund Hagen

30<sup>th</sup> of November 2022 – 10:45 AM

---



## Winston Churchill on democracy and counter debaters

- On democracy: *Democracy is the worst form of government there is, apart from all the others that have been tried through the ages.*
  - On counter debaters – Lady Astor (in fact a conservative too)....
-



## Our programme for today

Time	What	Where	Who
10:00	Arrival Coffee, Tea, and Biscuits	City Hall	
10:30	Welcome to Elverum The municipality and the city	The municipal council hall	Eldri Svisdal, Deputy mayor.
10:45	The municipality's operations and organisation <ul style="list-style-type: none"><li>▪ Presentation</li><li>▪ Comments, questions and answers</li></ul>	The municipal council hall	Aasmund Hagen, Municipality deputy director.
11:45	Departure for Norwegian Forest Museum		The participants.
12:00	Lunch	Norwegian Forest Museum	The participants.
13:15	Bus to City Hall		
13:30	The municipality's services – intermunicipal cooperation <ul style="list-style-type: none"><li>▪ Legislation and legal framework</li><li>▪ Municipal companies</li><li>▪ Intermunicipal cooperations</li><li>▪ Decision mechanisms</li><li>▪ Benefits and challenges of inter-municipal cooperation</li><li>▪ Dialogue - Comments, questions and answers.</li></ul>	The municipal council hall	Aasmund Hagen, Municipality deputy director.  Trude Seland Nyberg, Legal adviser.  The participants.
14:45	Coffee break		The participants.
15:00	Energy, climate and sustainability <ul style="list-style-type: none"><li>▪ Planning and cooperations</li><li>▪ About Ydalir</li></ul>	The municipal council hall	Alf Kristian Enger, Dipl. engineer, international adviser.
15:30	Visit to Ydalir - a Zero Emission Neighbourhood (by bus and on foot)	Ydalir – part of town.	The participants.
16:30	Check in at hotel		KS
18:00	Working Dinner	Restaurant in town	The participants.



# The municipality's 5 roles

- Service producer
  - Authority Manager
  - Community developer
  - Democratic arena
  - Employer
-



## Our service areas

- Nursing and care
  - Health – prevention and treatment
  - Child protection
  - School
  - Kindergarten
  - Technical management
  - Technical operations
  - Culture and religious purposes
  - Social service assistance
  - Social – financial assistance
  - Business development
  - Administration
  - Political governance - elected representatives
-

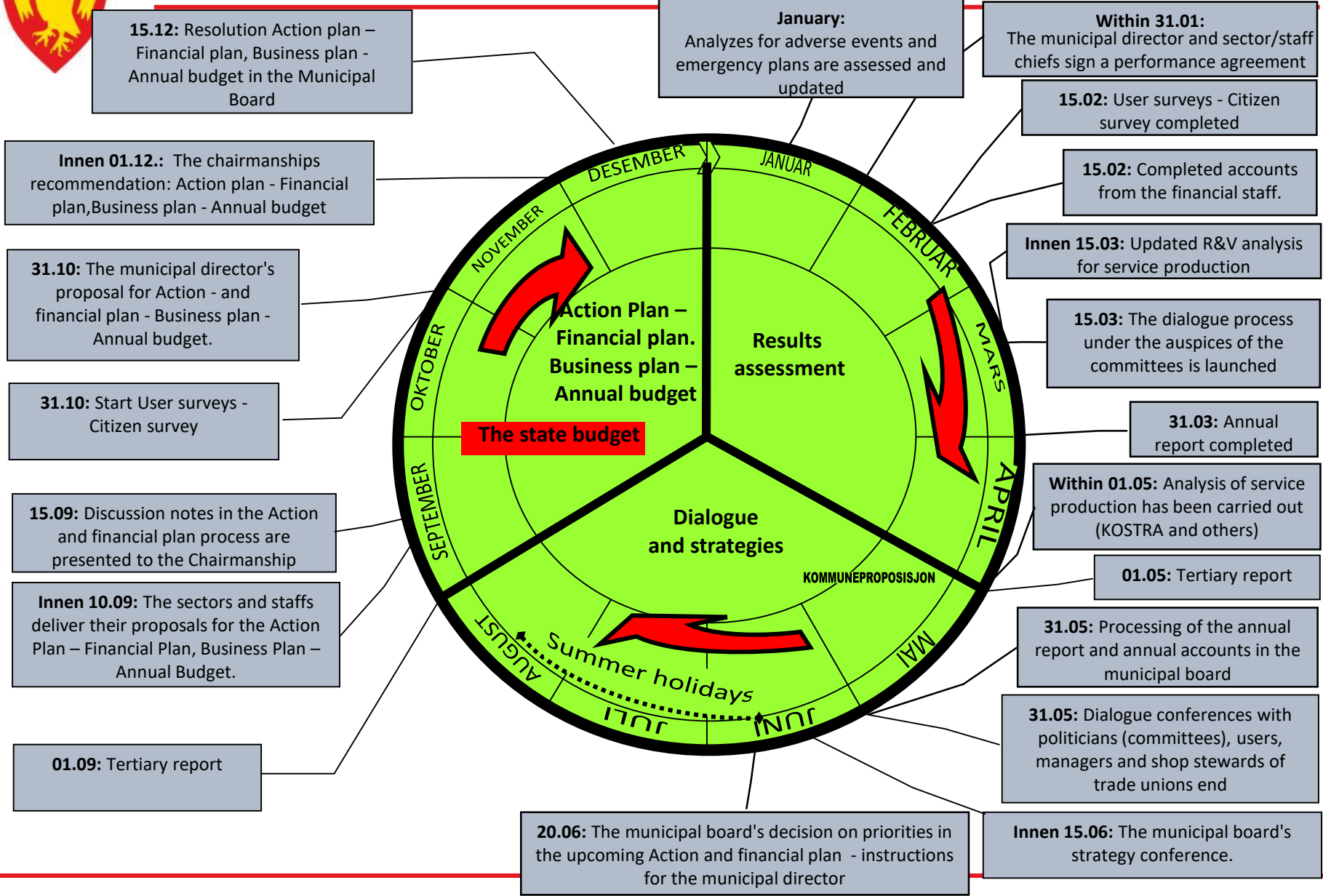


## Service area School – the different services

- Ordinary primary school education
  - Special educational measures
  - The PP service - educational psychology service
  - The speech therapy service
  - Primary education for adults
  - Special education for adults
  - Training in Norwegian and social studies for adult immigrants
  - After-school program – SFO
  - School premises and outdoor facilities
  - School bus
  - Cultural school
-

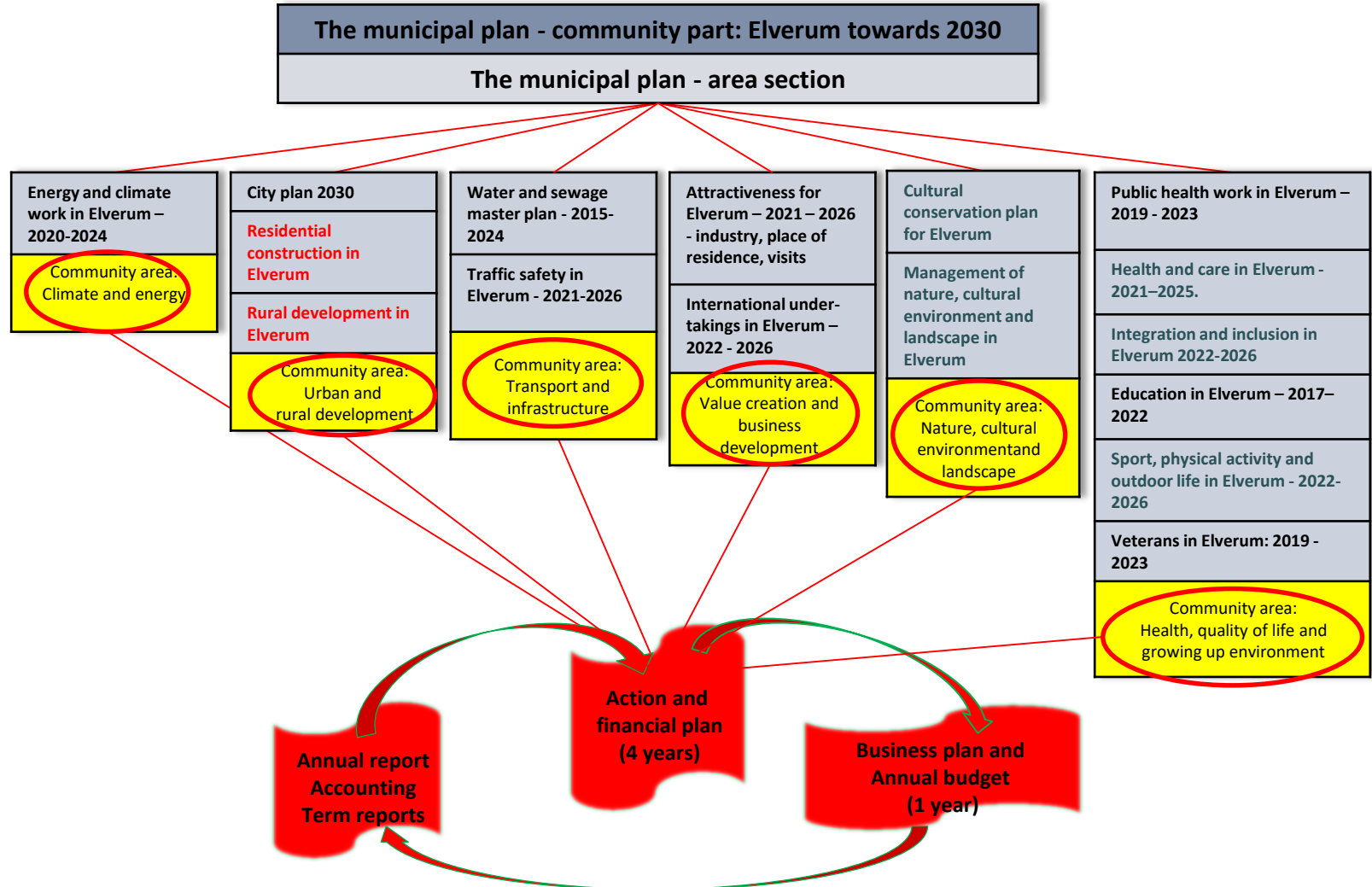


## THE WHEEL OF THE YEAR FOR GOVERNANCE





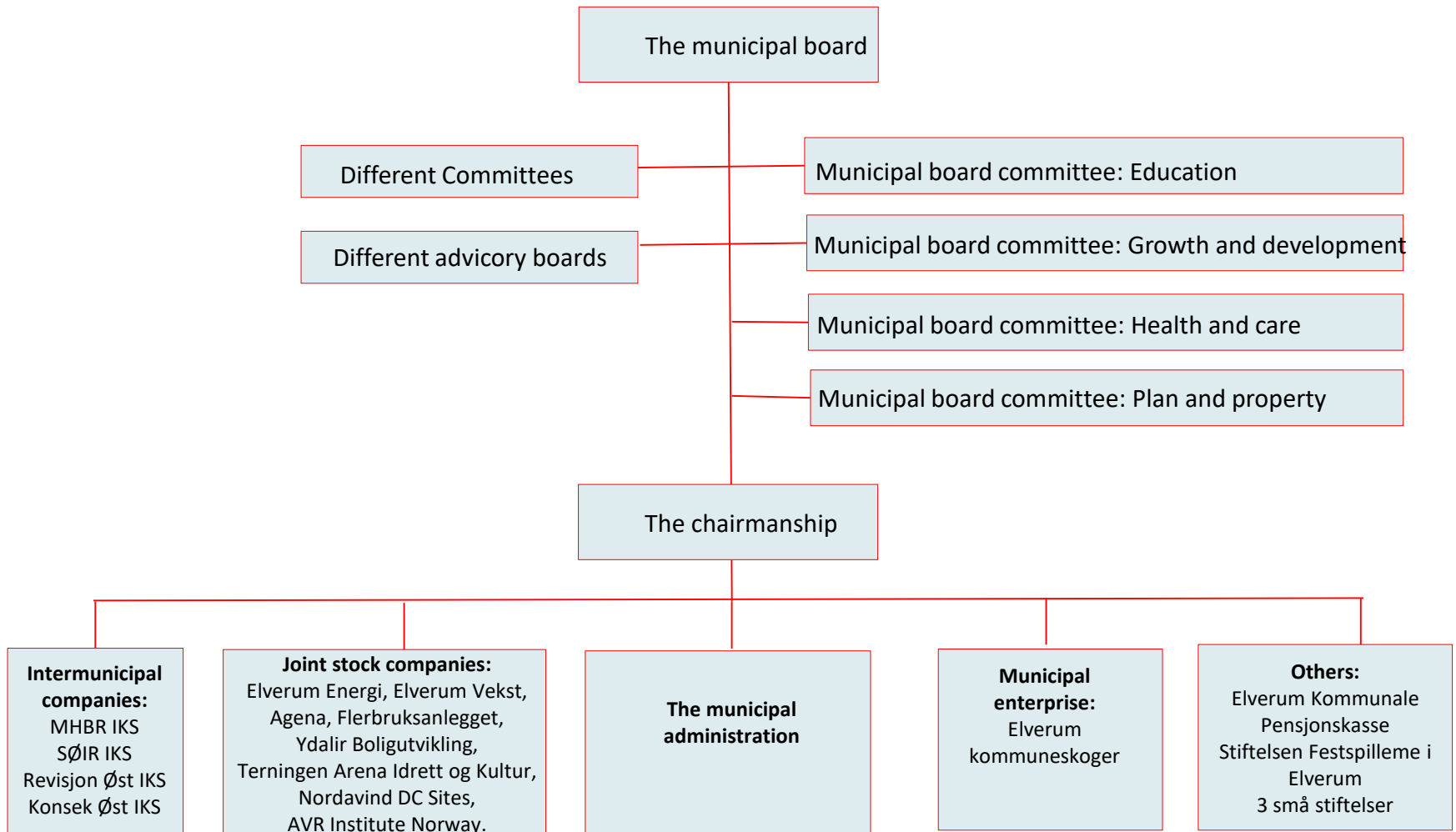
## Our plans





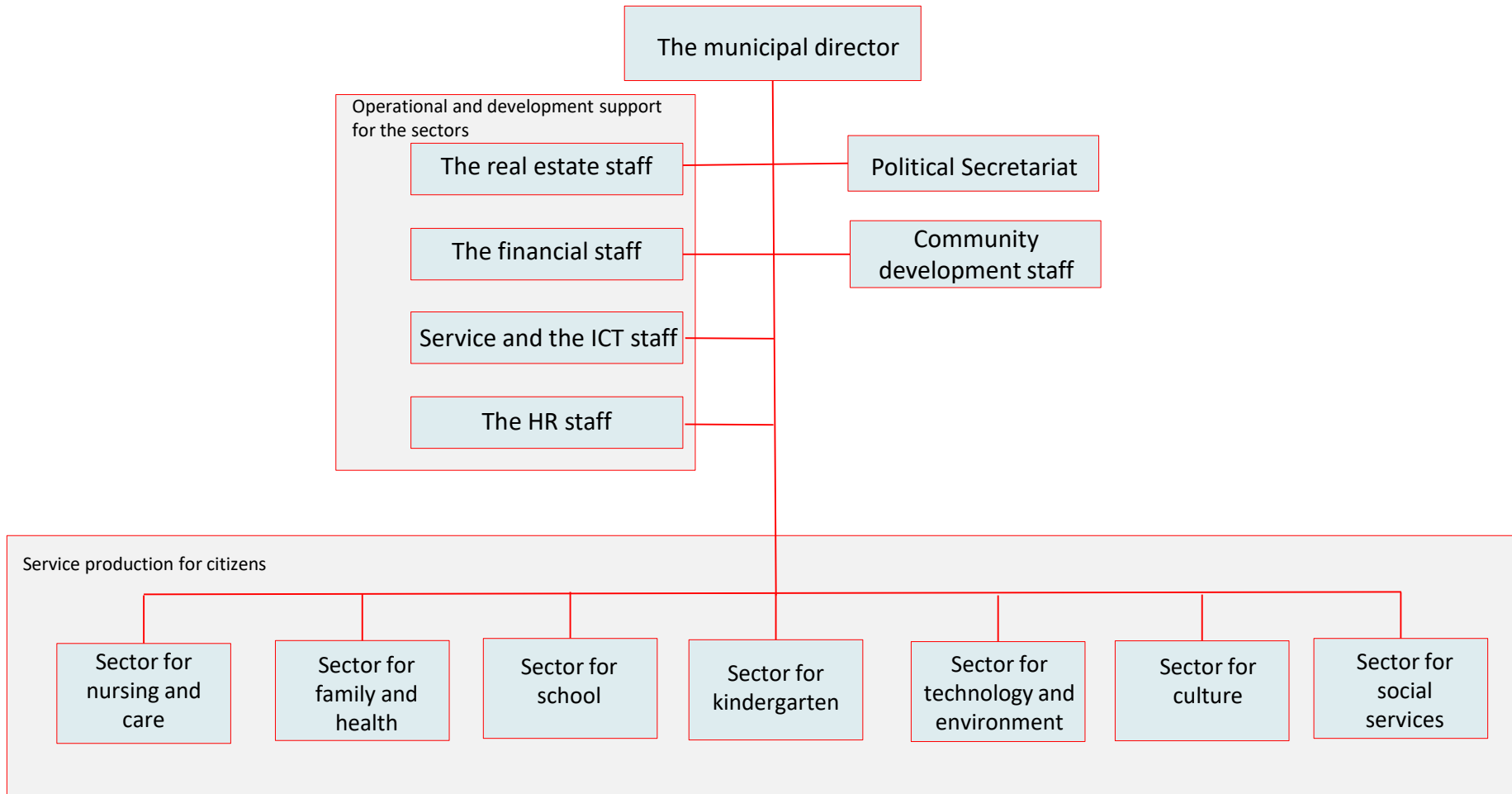


## The municipal organization in Elverum - Elected bodies





## Operative municipal organization in Elverum





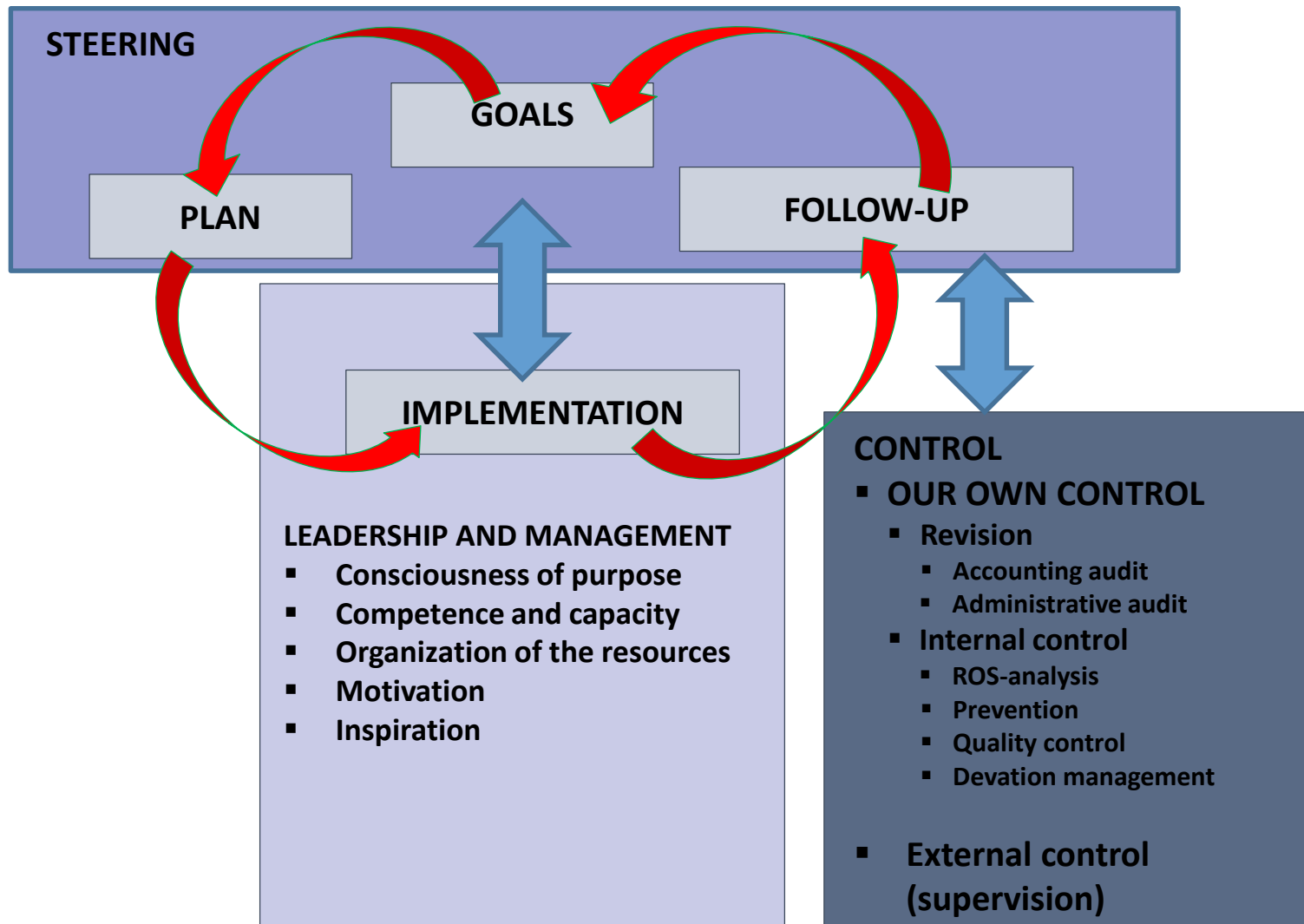
# The municipal organization's resources

## 2022 – main figures:

- Gross operating income: 1,76 billion NOK.
  - For service production : 1,29 billion NOK.
  
  - 1.400 man-years distributed among well over 2.000 employees.
  
  - Buildings made for different purposes: 140.000 m<sup>2</sup> - divided into nurseries, schools, health and care institutions, technical buildings and installations, administration buildings.
-



# Steering – Management - Control





## From our own business plan

### Styring – Ledelse - Kontroll



### External control

The municipality's activities are subject to external control. This is particularly ensured by the State Administrator through supervision of selected business areas. This is part of the state's dual role vis-à-vis the municipalities: On the one hand, by adopting laws and regulations for citizens' rights and allocating financial resources for the municipalities' operations. On the other hand, to supervise (the State Administrator's role) that the municipalities carry out this role properly. As a result of inspections, the municipality receives inspection reports with recommendations and possibly orders for improvements, all depending on the findings of the inspection.

### Internal control

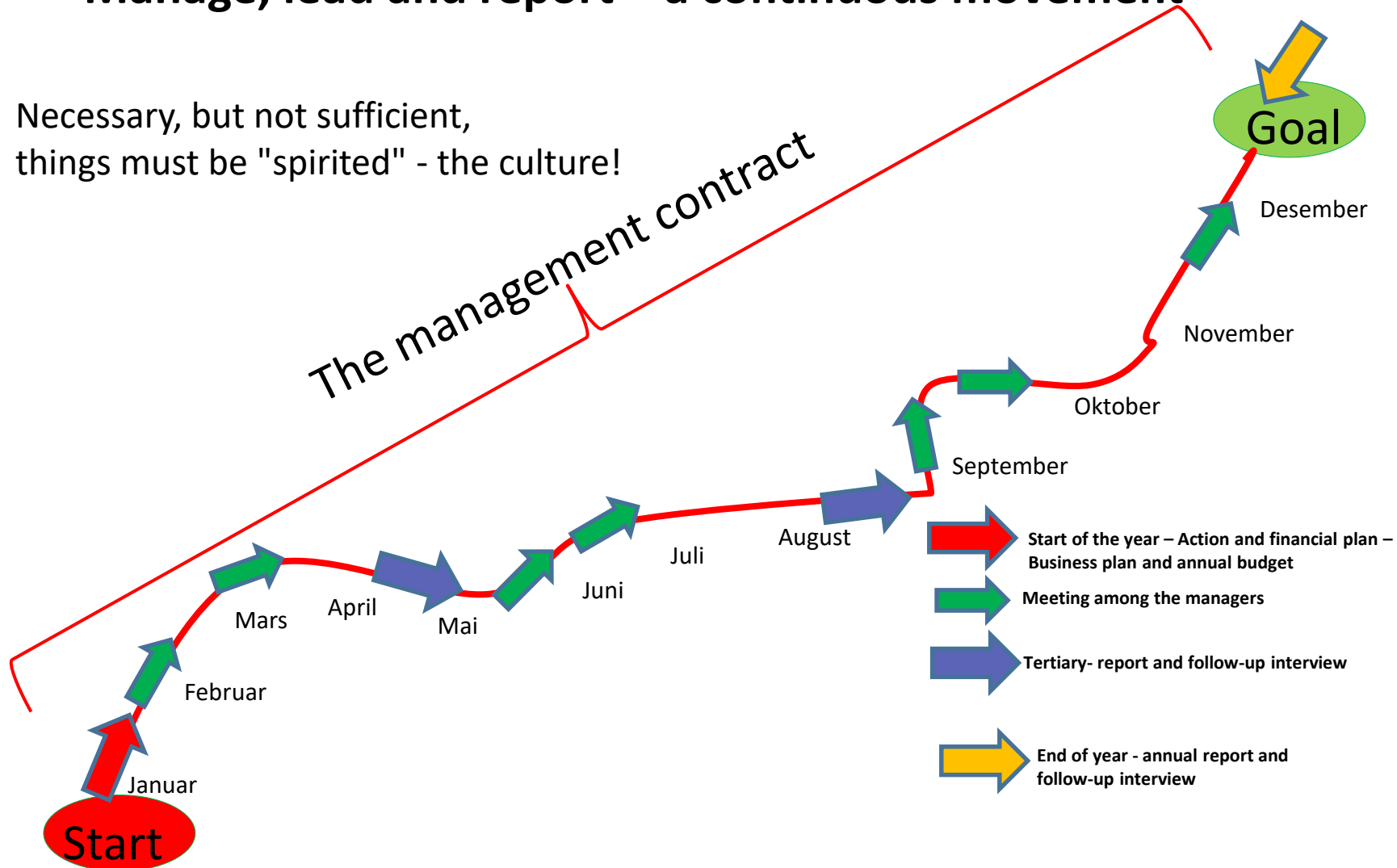
The municipality has internal control of the business in accordance with laws and regulations. This is done to ensure legal and responsible use of the community's funds, reduce the risk of management failure, errors and deficiencies, ensure transparency and prevent default. In practice, this is ensured in particular through systematic audits of the business, annual accounting audits and periodic management audits of the municipality's businesses and companies. The municipality's control committee has a special responsibility in this control work. In addition, the municipality has a system for internal control in sectors and staffs which, among other things, involves updating a risk and vulnerability analysis (ROS analysis) for service production annually, carrying out quality work and applying a quality system with non-conformance management and carrying out preventive development work. The municipality has its own anti-corruption program which has been implemented since 2018.



## Manage, lead and report – a continuous movement

Necessary, but not sufficient,  
things must be "spirited" - the culture!

The management contract



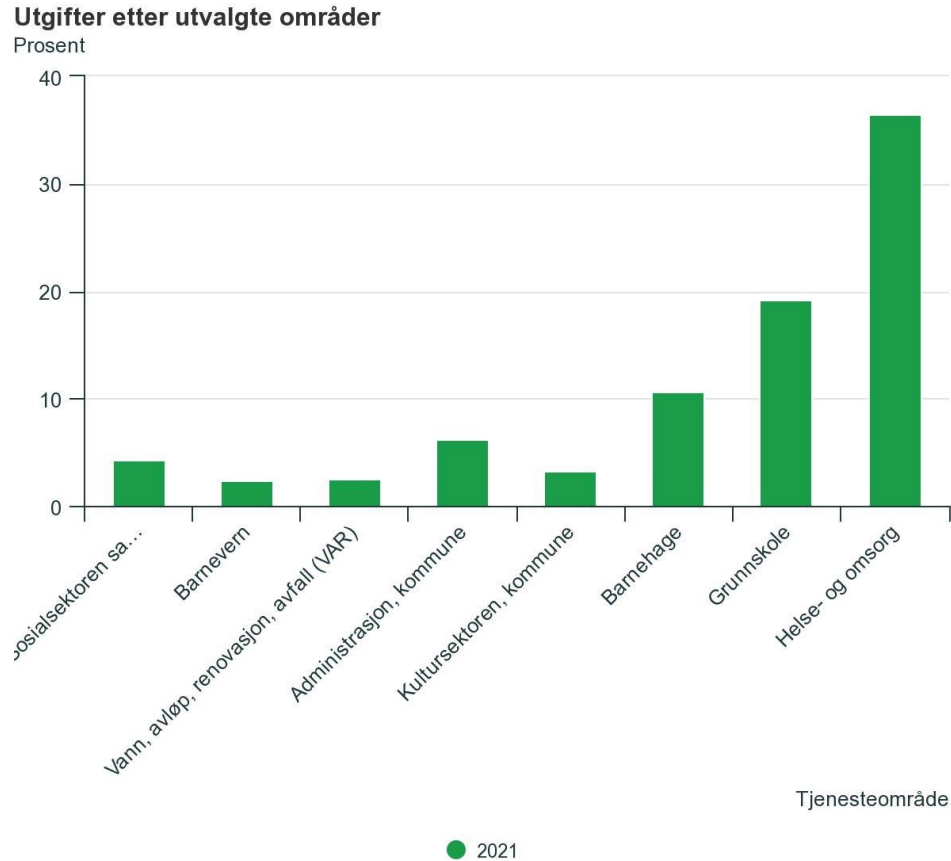


## Elverum - Our challenges

- As for all of Europe, people live longer making a bigger share of the population elderly people, this affects how we perform our services. Innovation is needed.
  - Public budgets will not grow for the coming years – we must create more within frames of less resources.
  - Regional competition hardens – we work hard to make our community attractive – attractive for living, for making business and for visiting.
  - We are not wealthy, on an ordinary Norwegian average level – and for the time being we have quite high debts, because of heavy investments in infrastructure (buildings, equipment etc.) in health care, kindergartens and schools. It means we have to strive quite much every year to balance the budget for the coming years.
  - To attract managers and employees with the right competence to a large enough extent to serve our inhabitants with expected services.
-



# The use of the municipality's financial resources - 2021



**Kilde:**  
Kommuneregnskap, Statistisk sentralbyrå





## Ydalir - primary school and kindergarten and climate-smart development area



- One of our largest urban development initiatives.
  - It is a pilot part of a national research and development project – 2017 – 2024 called “Zero Emission Neighbourhood”.
  - The school and the kindergarten were opened in 2019, both constructed in solid wood, climate-neutral energy supply from district heating systems, cutting-edge waste management etc.
  - Some 800 housing units according to passive house standard are planned to be constructed up to 2030.
-



**Thank you for your attention**

---